

STITCHER'S ALPHABET

Complimentary Cross Stitch Designs by Brooke Nolan



Copyright © 2006 Brooke's Books Publishing

This design may be reproduced for newsletter or handout but may not be kitted or sold.

From the Aran Sweater to the Zig Zag Stitch, the love of needlework is this alphabet's theme. Each letter block represents a unique stitching pleasure possessed by the hearts and hands of stitchers everywhere.

Letter Blocks are 31 x 36 stitches each.

They can be stitched, beaded, and embellished as individual motifs or stitched together on your fabric of choice to create a Stitcher's Sampler.

The model pictured here was stitched over two threads on 28 count Tea-Dyed Monaco by Charles Craft.

Finished dimensions will vary depending on fabric count and placement of the blocks in the composition.

Brooke's Books
P U B L I S H I N G

www.brookesbooks.com

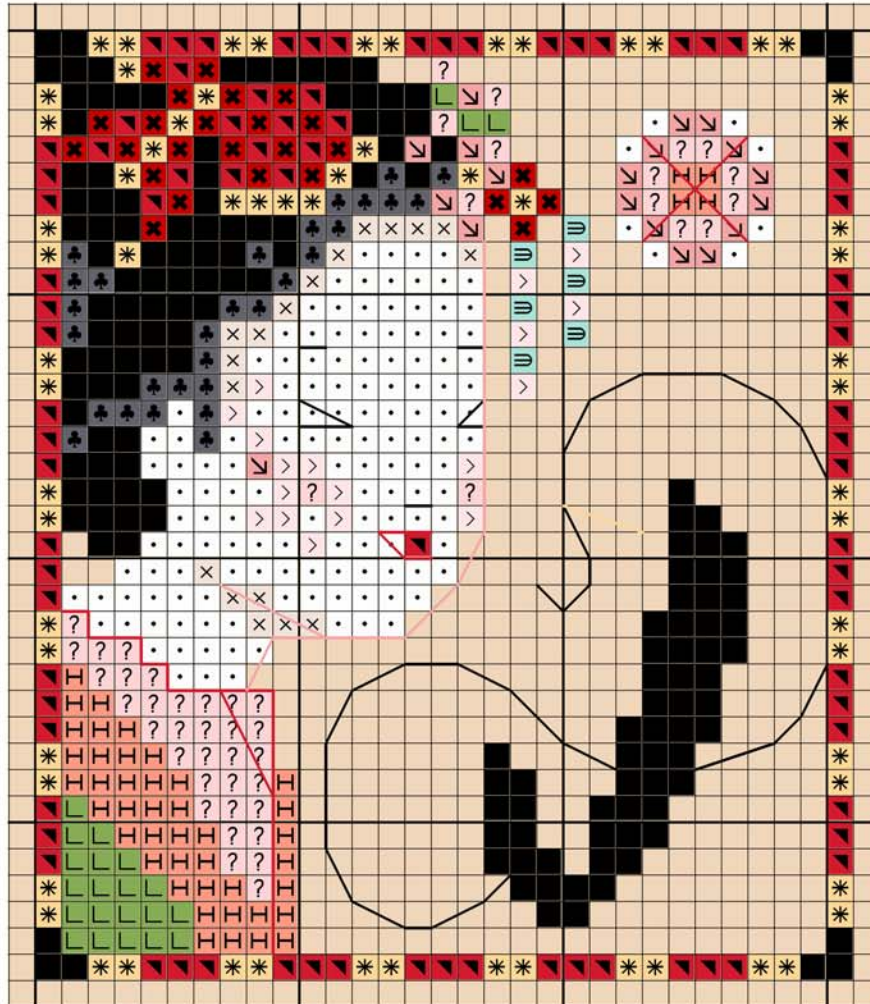
[email: brooke@brookesbooks.com](mailto:brooke@brookesbooks.com)

<http://stores.ebay.com/CROSS-STITCH-AND-MORE-STORE>

<http://groups.yahoo.com/group/brookesbookscrossstitchfreebies/>

J IS FOR JAPANESE EMBROIDERY

Complimentary Cross Stitch Design by Brooke Nolan



From The Stitcher's Alphabet - Copyright © 2007 Brooke's Books Publishing

Symbol	DMC	Color
•	White	White
x	Ecru	Ecru
>	819	Baby Pink Lt
?	818	Baby Pink
↘	3326	Rose Lt
↙	3340	Apricot Md
↖	321	Bright Red
⊓	964	Seagreen Lt
⊔	703	Chartreuse
♣	317	Pewter Gray
■	310	Black

Symbol	Mill Hill	Floss Used
✖	03049	321

Symbol	Color
✧	3280 Citrine
✧	#8 Fine Braid

Cross Stitch & Bead: If stitching on 14 to 18 count fabric, use 2 strands of floss to cross stitch and also bead the motif. (If you have trouble threading a beading needle with 2 strands of floss, put 1 strand of floss through the eye and pull the end down so there are 2 working strands.)

Back Stitch: Use 1 strand of floss unless otherwise noted. DMC 321: Lips and collar on Geisha / Big X on floating ball in the corner. DMC 310: Eyebrows and nose (2 strands for eyes) on Geisha. DMC 3326: Face and neck outline on Geisha. Kreinik 3280: Embroidery needle.